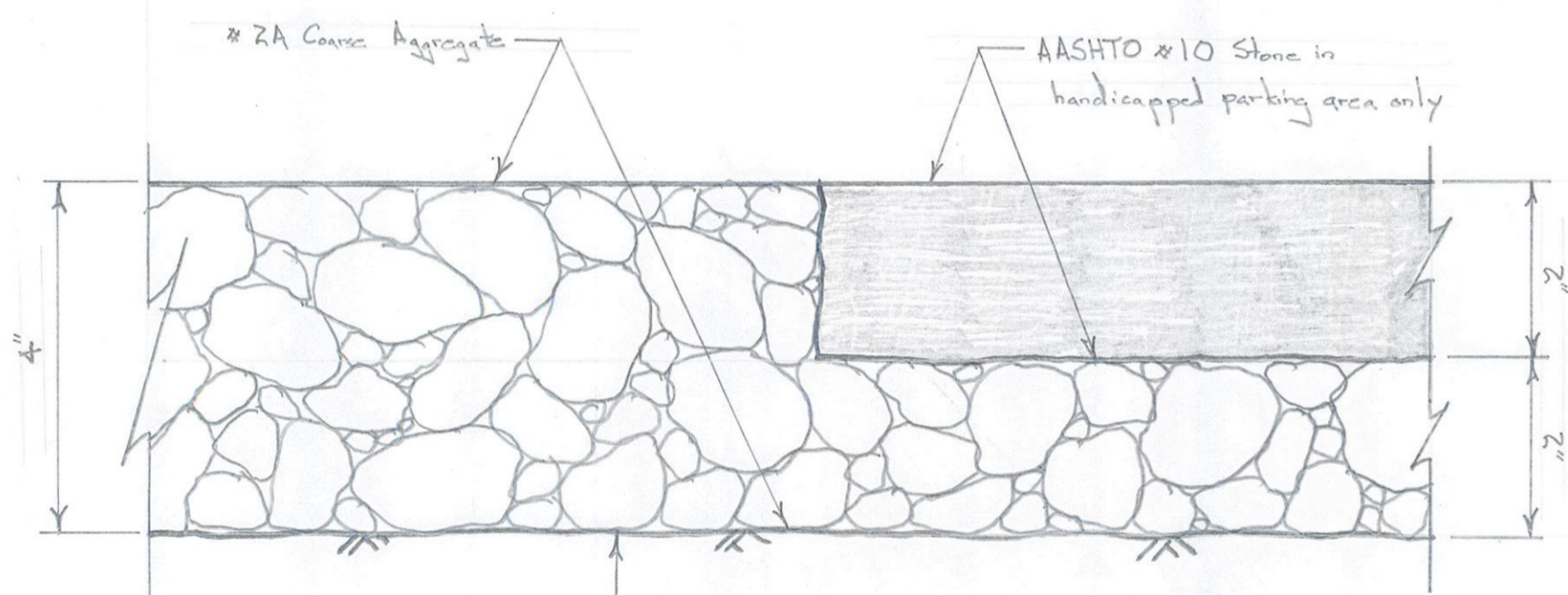
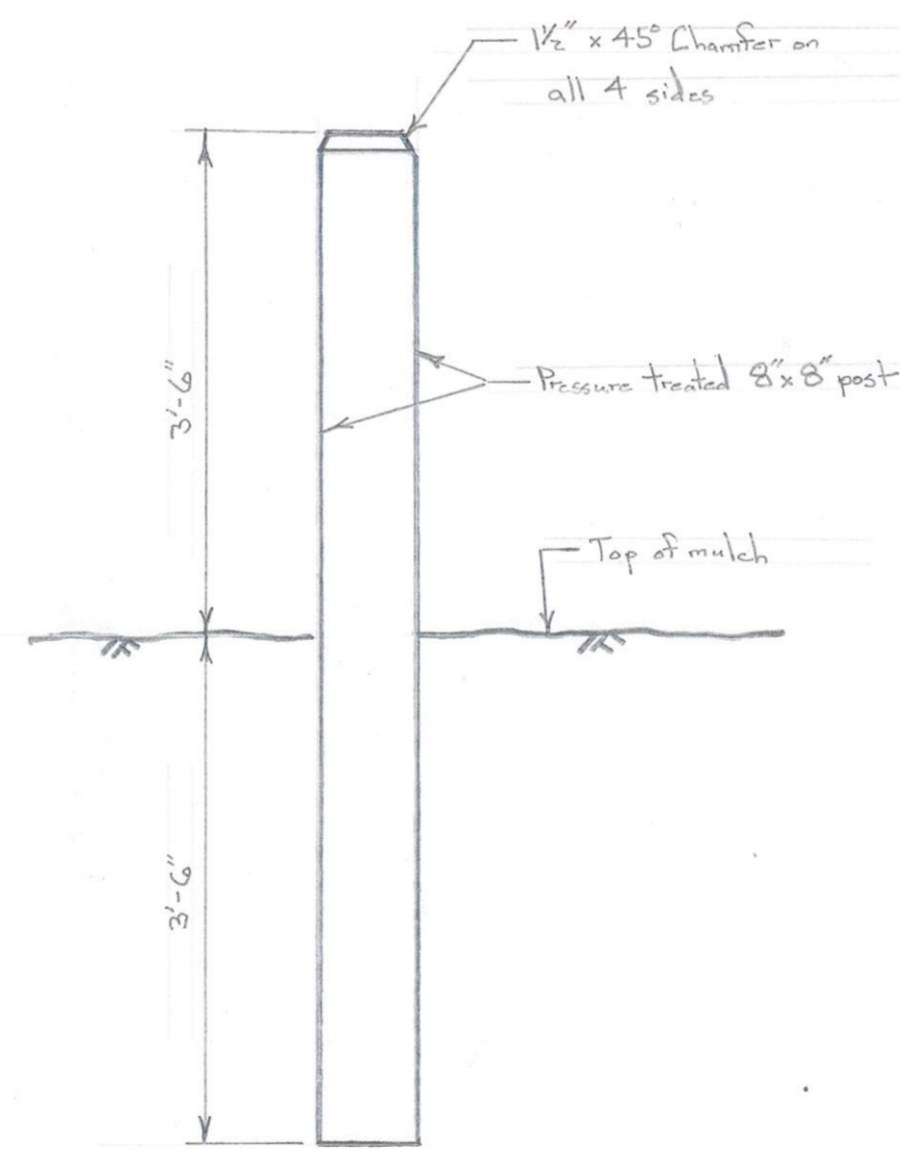


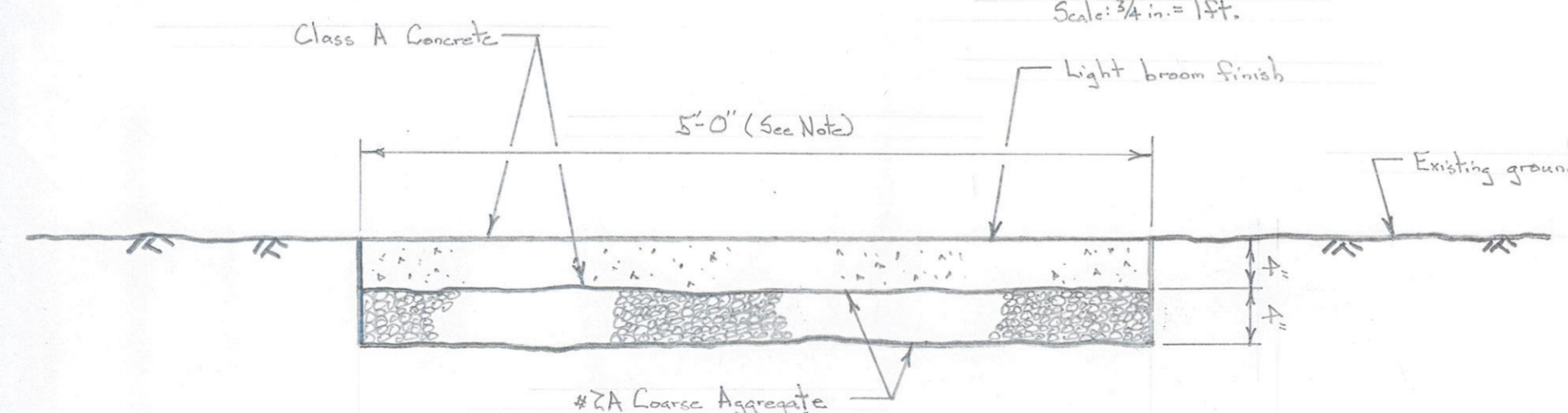
PARKING AREA DETAILS
Scale: 1/4" = 1'-0"



PARKING LOT SECTION
Half Scale

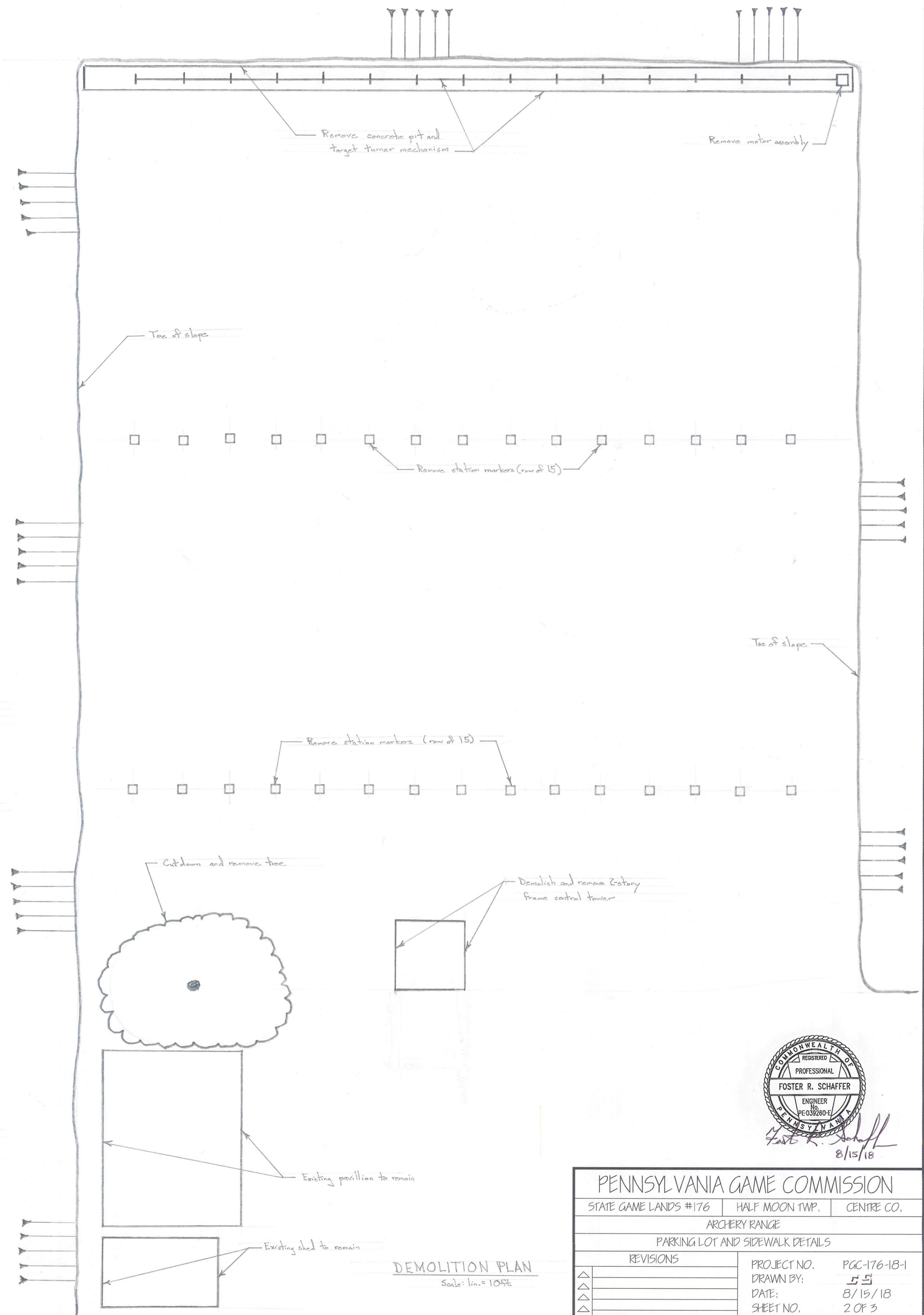


GUARD POST DETAIL
Scale: 3/4" = 1'-0"



SIDEWALK DETAIL
Scale: 1" = 1'-0"

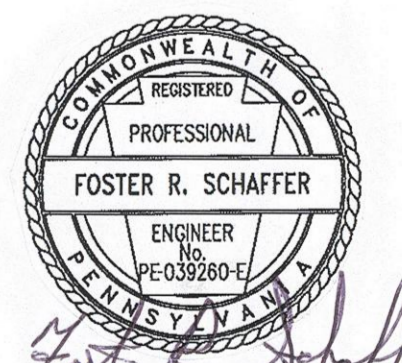
Note: Sidewalk is 8'-0" wide along parking lot median.



DEMOLITION PLAN
Scale: 1" = 10'-0"

CONCRETE NOTES

1. All concrete is PennDOT Class A concrete with a mix design compressive strength of 3,300 psi. The concrete shall have poly fibers included in the mix.
2. Exposed surfaces shall receive a light broom finish for traction.
3. Concrete shall be membrane cured. Membrane can be applied by spray, roller or brush.
4. All exposed edges shall be rounded with a concrete edger. The edger shall have a 1/2-inch radius.
5. The sidewalks shall have joints spaced on 5-foot centers and 8-foot centers to match the appropriate width of the sidewalk. The joints can be formed, tooled or sawcut.
6. Every third joint shall be an expansion joint with 3/4" preformed joint material. The joints at walkway intersections are considered expansion joints and must be equipped with joint material.



Foster R. Schaffer
8/15/18

PENNSYLVANIA GAME COMMISSION		
STATE GAME LANDS #176	HALF MOON TWP.	CENTRE CO.
ARCHERY RANGE		
PARKING LOT AND SIDEWALK DETAILS		
REVISIONS	PROJECT NO.	PGC-176-18-1
▲	DRAWN BY:	ES
▲	DATE:	8/15/18
▲	SHEET NO.	2 OF 3